

# Purple Martin (*Progne subis arboricola*): Males



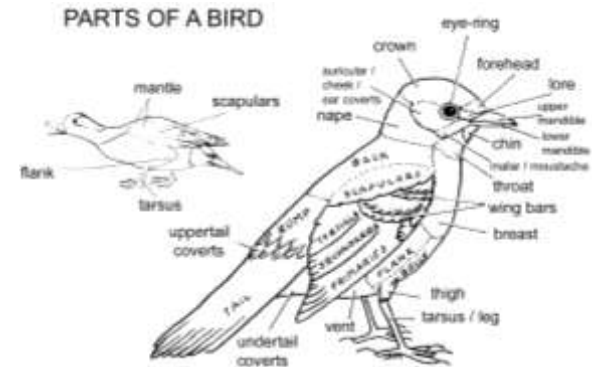
Adult Male



Adult Male



From left to right: Adult Female, Adult Male, and Juvenile Male



Subadult Male



Subadult Male

Part of Bird	Adult Male	Subadult Male	Adult Female
Crown and cheek	All plumage glossy purple-black (or steel-blue)	Stronger PURPLE	Less purple
Chin, throat, breast, flank, belly, undertail-coverts		Sprinkling of PURPLE feathers in one or more of these areas	NEVER has purple feathers in these areas
Nape, back, rump		Scattering of isolated purple feathers	Purple

**Note:** It can be difficult to distinguish between the adult female and subadult male  
**Interesting fact:** Male PUMAs don't turn purple until their 3<sup>rd</sup> year. During their second wintering in Brazil they molt into their purple plumage.

## Purple Martin (*Progne subis arboricola*): Females



Adult Female



Adult Female



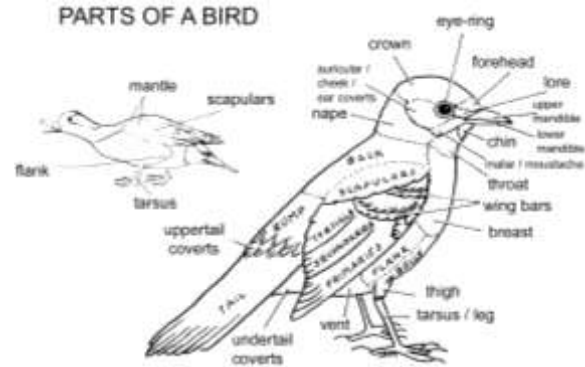
Left: Adult Female  
Right: Adult Male



Subadult Female



Subadult Female



Part of Bird	Adult Female	Subadult Female
Upper Surface (back side)	Bright PURPLE (fades with season)	Weak purple to brownish
Undertail-coverts	Dusky	Pure white or faintly dusky
Belly and breast	Dusky	Lighter
Crown, nape, "shoulders," back, and rump	More purple	More brown